



Horizon 2020  
Programme

**LEAP-RE**

*Research and Innovation Action (RIA)*

This project has received funding from the European Union's Horizon 2020 research and innovation programme under grant agreement No 963530

Start date : 2020-10-01 Duration : 72 Months  
<http://www.leap-re.eu/>



---

**Online MEL platform**

---

Authors : Nicola MANISI (LGI), Gianni Nardone (LGI)

LEAP-RE - Contract Number: 963530

Project officer: Maria-Laura TRIFILETTI

Document title	Online MEL platform
Author(s)	Nicola MANISI, Gianni Nardone (LGI)
Number of pages	25
Document type	Deliverable
Work Package	WP4
Document number	D4.12
Issued by	LGI
Date of completion	2026-04-02 17:16:37
Dissemination level	Public

---

### Summary

This document provides a comprehensive overview of the LEAP-RE Platform's monitoring and learning module (M&L). It explain the objectives of this new module, the access rights and the project data collection process.

---

### Approval

Date	By
2026-04-30 09:36:49	Kaisa KURKI (UHEL)
2026-04-30 10:48:31	Léonard LÉVÊQUE (LGI)



# LEAP-RE

Long-Term Joint EU-AU Research  
and Innovation Partnership on Renewable Energy

Research & Innovation Action

March 2026

## D4.12 – Online MEL platform

Version N°1

Authors:

Gianni NARDONE (LGI), Nicola MANISI (LGI)



This project has received funding from the European Union's Horizon 2020  
Research and Innovation Program under Grant Agreement 963530.

## **Disclaimer**

Funded by the European Union. Views and opinions expressed are however those of the author(s) only and do not necessarily reflect those of the European Union or CINEA. Neither the European Union nor the granting authority can be held responsible for them.



## Document information

<b>Grant Agreement</b>	963530
<b>Project Title</b>	Long-Term Joint EU-AU Research and Innovation Partnership on Renewable Energy
<b>Project Acronym</b>	LEAP-RE
<b>Project Coordinator</b>	Vincent Chauvet – LGI
<b>Project Duration</b>	1 <sup>st</sup> October 2020 – 30 <sup>st</sup> September 2026 (72 Months)
<b>Related Work Package</b>	WP4
<b>Related Task(s)</b>	T4.1
<b>Lead Organisation</b>	LGI
<b>Contributing Partner(s)</b>	
<b>Due Date</b>	March 2026
<b>Submission Date</b>	April 2026
<b>Dissemination level</b>	PU

## History

Date	Version	Submitted by	Reviewed by	Comments
04/03/2026	01	Gianni NARDONE (LGI)	Mathilde Videlo (LGI) Léonard Lévêque (LGI)	
01/04/2026	02	Nicola MANISI (LGI)	Jovia NAMPEWO (SU) Marie-Laure TAROT (ANR)	



## Table of contents

1. Introduction .....	6
2. Platform objectives and overview .....	7
2.1 Purpose.....	7
2.2 Users and access rights .....	7
2.3 Reporting process.....	9
3. LEAP-RE Online MEL Platform features .....	10
3.1 Project page.....	10
3.2 Start a reporting .....	12
3.3 General Information.....	12
3.4 Sustainable Development Goals (SDG) .....	15
3.5 Multi-Annual Roadmap (MARs) .....	17
3.6 Policy engagement .....	18
3.7 Theory of Change .....	19
3.8 Validation .....	21
3.9 Back office .....	21
3.10 Dashboard .....	22
4. Conclusion.....	25

## List of tables

<b>Table 1: Users and access rights .....</b>	<b>8</b>
-----------------------------------------------	----------

## List of figures

<i>Figure 1. Project profile page .....</i>	<i>11</i>
<i>Figure 2. Start a reporting .....</i>	<i>12</i>
<i>Figure 3. General information .....</i>	<i>14</i>
<i>Figure 4. SDG page .....</i>	<i>16</i>
<i>Figure 5. MARs page .....</i>	<i>17</i>
<i>Figure 6. Policy engagement .....</i>	<i>18</i>
<i>Figure 7. Theory of Change .....</i>	<i>20</i>
<i>Figure 8. Validation .....</i>	<i>21</i>
<i>Figure 9. Back office .....</i>	<i>22</i>
<i>Figure 10. Dashboard page .....</i>	<i>24</i>

## Abbreviations and Acronyms

Acronym	Description
WP	Work Package
KR	Knowledge Repository
GDPR	General Data Protection Regulation

## Summary

This document provides a comprehensive overview of the LEAP-RE Platform's monitoring and learning module (M&L). It explain the objectives of this new module, the access rights and the project data collection process.

## Keywords

Collaboration, Digital tools, Knowledge sharing,

# 1. Introduction

This document presents the final mock-ups and functional overview of the **Online Monitoring, Evaluation, and Learning (MEL) Platform** developed for the LEAP-RE project. The platform has been designed to facilitate continuous monitoring of all LEAP-RE funded projects, enabling project teams, Funding Organisations, and coordinators to collect, review, and analyze project data in a structured and transparent manner.

The purpose of this platform is to support **efficient reporting, accurate impact measurement, and evidence-based decision-making** across the entire LEAP-RE portfolio. By providing standardized data entry forms, role-based access controls, and multi-level validation workflows, the platform ensures that information is reliable, traceable, and aligned with the governance requirements of the LEAP-RE initiative, as well as with the EC monitoring frameworks.

This deliverable includes detailed mock-ups of the platform's core features, illustrating how users interact with the system to report project activities, results, and impacts. It demonstrates the flow from project profile management, report initiation, and data submission, to the review and validation by Funding Organisations and the Programme Coordinators (LGI, DSTI, ANR and MESRS), as well as the visualization of aggregated data through dashboards.

The following sections present the **needs and objectives of the platform**, the user roles and access rights, the reporting process, and the full set of mock-ups that showcase the platform's design and functionality. This document aims to provide a comprehensive understanding of how the MEL Platform will **enhance monitoring, evaluation, and learning across LEAP-RE projects**, ensuring transparency, accountability, and impact measurement for all stakeholders involved.

This document takes into consideration the AU-EU High Level Policy Dialogue on Science Technology and Innovation Monitoring, Evaluation, and Learning (MEL) Framework Report 2024. In particular it builds on three "impact pathways" outlining a simplified (and hypothesised) causal chain of events that connects the activities carried out to effects on the economy and wider society:

- **Impact pathway 1:** "Generation of tangible research outputs to allow dissemination and uptake and generate real impact"
- **Impact pathway 2:** "Design projects to strengthen stakeholder capacities and create an environment conducive to innovations that have a lasting impact"
- **Impact pathway 3:** "Improve and extend partnerships by enhancing coordination and develop shared projects"

This document also builds on D1.17 Monitoring and Evaluation (M&E) System Report of 8 Work Packages of Pillar 2, drafted by SU and UEFISCDI. The Monitoring and Evaluation (M&E) System Report is the final assessment of the eight Research and Innovation (R&I) projects within the LEAP-RE Pillar 2 portfolio. The key objective of the M&E exercise is to provide exhaustive evaluation of project progress, achievements, and lessons learned to inform future Africa-Europe R&I collaborations. The methodology employed a mixed-methods approach, combining qualitative evaluation (structured interviews and thematic analysis) with a quantitative Key Performance Indicator (KPI) assessment. Crucially, the KPI scoring was refined to align with the combined assessment criteria of the CCSE Partnership and the HLPD's three Impact Pathways (Tangible Outputs, Stakeholder Capacities, and Partnerships). This alignment ensures the assessment directly measures contribution to the program's strategic goals. The results confirm the strong overall



performance of the Pillar 2 portfolio. Key findings include exceptional performance in Access to energy, and knowledge and capacity building. The report highlights persistent challenges, such as equipment customs delays and administrative burden, and provides insights for the design of future R&I programs.

## 2. Platform objectives and overview

This section outlines the key needs and user requirements that guided the design of the LEAP-RE Online MEL Platform. Platform mock-ups are included below in each section describing the tool. The following sections describe the platform's objectives, users, access rights, reporting workflow, and detailed mock-ups, providing a comprehensive reference for the implementation of the MEL Platform.

### 2.1 Purpose

The Online MEL (Monitoring, Evaluation, and Learning) Platform is designed to provide a comprehensive tool for monitoring the progress and impact of projects under the LEAP-RE initiative and its following components. Its primary objective is to facilitate a real-time, continuous reporting process, enabling project coordinators to record and update a wide range of information and data related to their project activities.

By centralizing project reporting, the platform aims to:

- Track project progress efficiently, ensuring timely updates.
- Monitor impact and performance, capturing quantitative and qualitative data that inform decision-making and learning.
- Support evidence-based management, allowing project teams and Funding Organisations to evaluate achievements and identify areas for improvement.
- Enable adaptive learning, by providing insights that guide project adjustments and strategic planning throughout the project lifecycle.

The platform is conceived as a user-friendly, interactive tool, integrating structured data input forms, automated dashboards, and reporting functionalities. This ensures that monitoring is not only accurate and comprehensive but also accessible and actionable for all stakeholders.

### 2.2 Users and access rights

The Online MEL Platform is designed to accommodate different types of users, each with specific roles and access rights, ensuring both efficient project monitoring and robust data governance. The main user groups are as follows:

#### 1. Project team members

- This group includes all personnel involved in LEAP-RE funded projects.
- **Project Coordinators** are the only members authorized to submit reports through the platform, capturing relevant project data, progress, and impact indicators. Other project team members can access the platform to consult information but cannot input or modify reporting data.



## 2. Funding Organisation

- Users with the Funding Organisation role will be linked to all projects that have at least one partner financed by that funding organisation, including LGI and Loughborough University.
- Their responsibilities include reviewing project data, ensuring the accuracy of submitted reports, and validating the reported information. This role provides a critical oversight function, confirming that project updates are consistent with funding agreements and objectives.

## 3. Programme Coordinators, WP3 and WP8 leaders

The programme is managed by key organisations ensuring global coordination between Africa and Europe: LGI (France), ANR (France), DSTI (South Africa), MESRS (Algeria).

- The ANR oversees the entire cascade funding process within LEAP-RE. Users from ANR have **full access to all project information**, enabling them to conduct a second-level verification of reports, assess data accuracy, and ultimately approve reporting submissions. This ensures that project monitoring and evaluation meet both national and European standards.
- LGI as global coordinator and leader of WP8, has full access rights to monitor all activities related to African beneficiaries not funded by a Funding Agency.
- DSTI & MESRS as the designated African leads for programme coordination and pillar management, are granted Strategic Monitoring access. This ensures that the MEL (Monitoring, Evaluation and Learning) framework aligns with the AU-EU partnership's long-term goals and provides the necessary oversight for African-led research activities.

### Access rights overview

The platform implements a hierarchical access model to maintain data integrity and confidentiality:

**Table 1: Users and access rights**

User group	Access level	Key capabilities
Project Coordinators	Limited (project-level)	Submit and update reports, view project data
Project Team Members	Read-only	Access project information without editing rights
Funding Organisations	Moderate (assigned projects)	Open projects, review and validate reporting
African Programme Coordinators (DSTI & MESRS)	Strategic monitoring (all projects)	View aggregated dashboards and individual project data, export performance dashboards

User group	Access level	Key capabilities
Programme Coordinators and WP leaders of the M&L	Full (all projects)	Access all information, verify and approve reports

## 2.3 Reporting process

The reporting process within the Online MEL Platform is designed to be continuous and flexible, allowing project coordinators to submit updates on an ongoing basis. The process ensures that project data is accurate, verifiable, and immediately integrated into the overall monitoring framework of LEAP-RE, while also enabling adaptive changes in the future.

### Key steps of the process:

#### 1. Initiation of reporting

- A Project Coordinator starts a new reporting cycle.
- Project team members assigned to the project can access the platform to consult information, but only the Project Coordinator has the authority to submit the report.

#### 2. Submission

- Once all required information is completed, the Project Coordinator submits the report.
- Submission triggers automatic workflows for review and validation.

#### 3. Funding Organisation review

- For each project assigned Funding Organisations review the submitted report to verify the accuracy and completeness of the information. In the event of a default by a specific organisation, LGI and ANR maintain the authority to act as proxies to complete the review.
- Upon validation, the report is officially accepted and counted toward the LEAP-RE general impact dashboard.

#### 4. Programme Coordinators verification (optional)

- Programme Coordinators have access to all project data and may perform a secondary review to ensure full compliance with funding and evaluation standards.

#### 5. Continuous reporting cycle

- Following submission, the project can immediately begin a new reporting cycle, allowing for ongoing monitoring and evaluation.
- This continuous approach ensures that project progress and impact data are always up-to-date and actionable.

**Process highlights:**

- **Flexibility:** the platform is designed to accommodate potential changes to composition and roles of project teams, reporting frequency and workflow of future iterations.
- **Collaboration:** Team members can contribute data while maintaining controlled submission authority.
- **Verification and integrity:** multi-level review ensures that reported data is reliable, transparent, and actionable.
- **Immediate integration:** validated reports are directly reflected in the LEAP-RE impact dashboards, supporting real-time monitoring and decision-making.

### 3. LEAP-RE Online MEL Platform features

This section presents the visual mock-ups of the Online MEL Platform, illustrating how the tool will function in practice to support project monitoring, evaluation, and learning within LEAP-RE. The mock-ups have been designed to provide a clear and intuitive user experience, reflecting the platform's key objectives: continuous reporting, collaborative data entry, and multi-level verification.

Each mock-up highlights specific functionalities and workflows, from project-level reporting to impact dashboards, demonstrating how users will interact with the system to record, review, and validate project information. The purpose of these mock-ups is to offer a concrete visualization of the platform, enabling stakeholders to understand both the structure and logic of the reporting process before the platform is fully implemented.

The following subsections detail each major page and feature of the platform, illustrating the user journey, data input mechanisms, and monitoring tools that together support a streamlined and effective MEL process.

#### 3.1 Project page

The **Project page** serves as the central hub for each LEAP-RE project within the Online MEL Platform. Building upon the existing project profile pages, this page consolidates essential project information while introducing enhanced functionalities to support more comprehensive monitoring and management.

**Key features:****1. Project overview**

- Displays core project information such as title, description, start and end dates, budget, partners, and key milestones.
- Provides a concise summary to give users an immediate understanding of the project's scope and objectives.

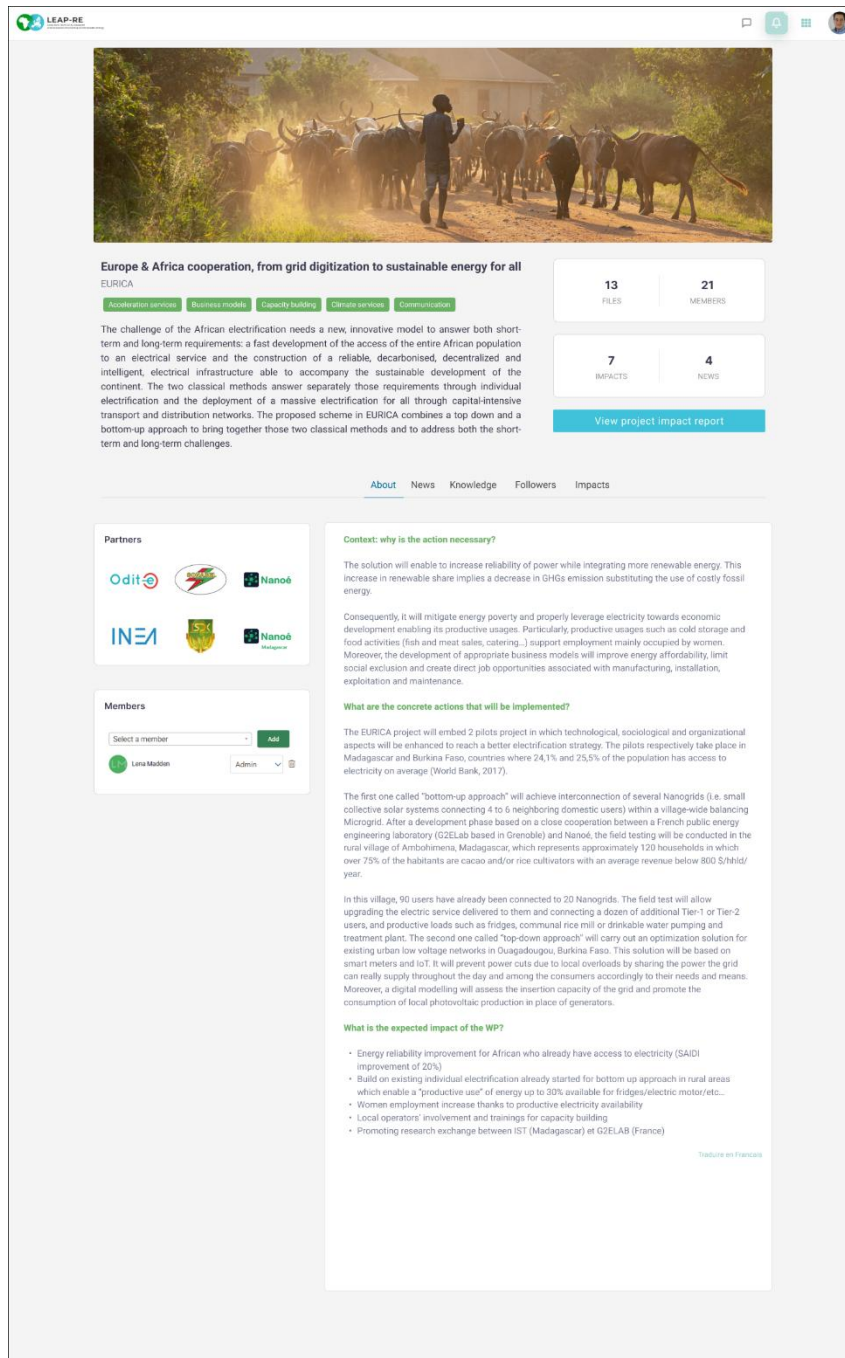
**2. Organizational information collection**

- Data about participating organizations, including structure, roles, and contact points.

- Supports improved reporting and analysis of organizational contributions and capacities.

### 3. User assignment and access rights

- Enables the assignment of users to specific projects with defined roles: User, Manager, or Admin (Project Coordinator).
- Access levels control the ability to submit reports, edit project information, or view sensitive data, ensuring data integrity and controlled collaboration.



**Europe & Africa cooperation, from grid digitization to sustainable energy for all**  
EURICA

Acceleration services | Business models | Capacity building | Climate services | Communication

The challenge of the African electrification needs a new, innovative model to answer both short-term and long-term requirements: a fast development of the access of the entire African population to an electrical service and the construction of a reliable, decarbonised, decentralized and intelligent, electrical infrastructure able to accompany the sustainable development of the continent. The two classical methods answer separately those requirements through individual electrification and the deployment of a massive electrification for all through capital-intensive transport and distribution networks. The proposed scheme in EURICA combines a top down and a bottom-up approach to bring together those two classical methods and to address both the short-term and long-term challenges.

13 FILES | 21 MEMBERS  
7 IMPACTS | 4 NEWS  
[View project impact report](#)

About | News | Knowledge | Followers | Impacts

**Partners**

Odit | INEA | Nanoé

**Members**

Select a member | Add  
Lena Maillon | Admin

**Context: why is the action necessary?**

The solution will enable to increase reliability of power while integrating more renewable energy. This increase in renewable share implies a decrease in GHGs emission substituting the use of costly fossil energy.

Consequently, it will mitigate energy poverty and properly leverage electricity towards economic development enabling its productive usages. Particularly, productive usages such as cold storage and food activities (fish and meat sales, catering...) support employment mainly occupied by women. Moreover, the development of appropriate business models will improve energy affordability, limit social exclusion and create direct job opportunities associated with manufacturing, installation, exploitation and maintenance.

**What are the concrete actions that will be implemented?**

The EURICA project will embed 2 pilots project in which technological, sociological and organizational aspects will be enhanced to reach a better electrification strategy. The pilots respectively take place in Madagascar and Burkina Faso, countries where 24,1% and 25,5% of the population has access to electricity on average (World Bank, 2017).

The first one called "bottom-up approach" will achieve interconnection of several Nanogrids (i.e. small collective solar systems connecting 4 to 6 neighboring domestic users) within a village-wide balancing Microgrid. After a development phase based on a close cooperation between a French public energy engineering laboratory (GZELab based in Grenoble) and Nanoé, the field testing will be conducted in the rural village of Ambohima, Madagascar, which represents approximately 120 households in which over 75% of the habitants are cacao and/or rice cultivators with an average revenue below 800 \$/hhid/year.

In this village, 90 users have already been connected to 20 Nanogrids. The field test will allow upgrading the electric service delivered to them and connecting a dozen of additional Tier-1 or Tier-2 users, and productive loads such as fridges, communal rice mill or drinkable water pumping and treatment plant. The second one called "top-down approach" will carry out an optimization solution for existing urban low voltage networks in Ouagadougou, Burkina Faso. This solution will be based on smart meters and IoT. It will prevent power cuts due to local overloads by sharing the power the grid can really supply throughout the day and among the consumers according to their needs and means. Moreover, a digital modelling will assess the insertion capacity of the grid and promote the consumption of local photovoltaic production in place of generators.

**What is the expected impact of the WP?**

- Energy reliability improvement for African who already have access to electricity (SAIDI improvement of 20%)
- Build on existing individual electrification already started for bottom up approach in rural areas which enable a "productive use" of energy up to 30% available for fridges/electric motor/etc...
- Women employment increase thanks to productive electricity availability
- Local operators' involvement and trainings for capacity building
- Promoting research exchange between IST (Madagascar) et GZELAB (France)

Traçure en France

Figure 1. Project profile page

## 3.2 Start a reporting

The **Start reporting** page marks the official initiation of a new reporting cycle for a project. When accessed, the page first displays a warning message that informs users about GDPR compliance requirements and explains the multi-level review process, including the roles of Funding Organisations and Programme Coordinators in validating submitted reports.

After acknowledging the disclaimer on the Strat reporting page, the Project Coordinator can officially start a new report, creating a dedicated entry in the platform's database. This entry will then serve as the structured container for all reporting data, ensuring that each submission is tracked, auditable, and aligned with the platform's governance procedures.

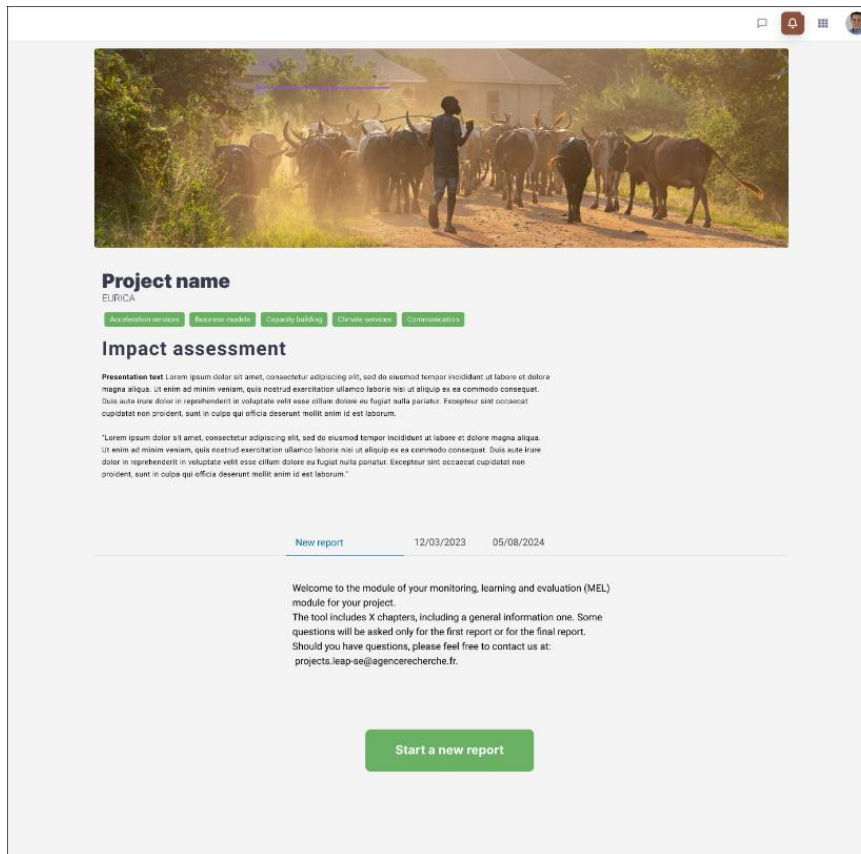


Figure 2. Start a reporting

## 3.3 General Information

The General Information page allows users to provide and update essential details about the project and its associated organizations. This section serves both to maintain an up-to-date project profile and to ensure accurate representation of participating organizations.

### Key features:

#### 1. Project profile updates

- Users are prompted with general questions about the project.
- These updates help maintain a comprehensive and current project profile within the platform.

## 2. **Organization information**

- The platform collects or updates data about organizations linked to the project, including structure, roles, and contact points.
- This ensures that all organizational contributions are accurately reflected in reporting and monitoring.

## 3. **Project classification**

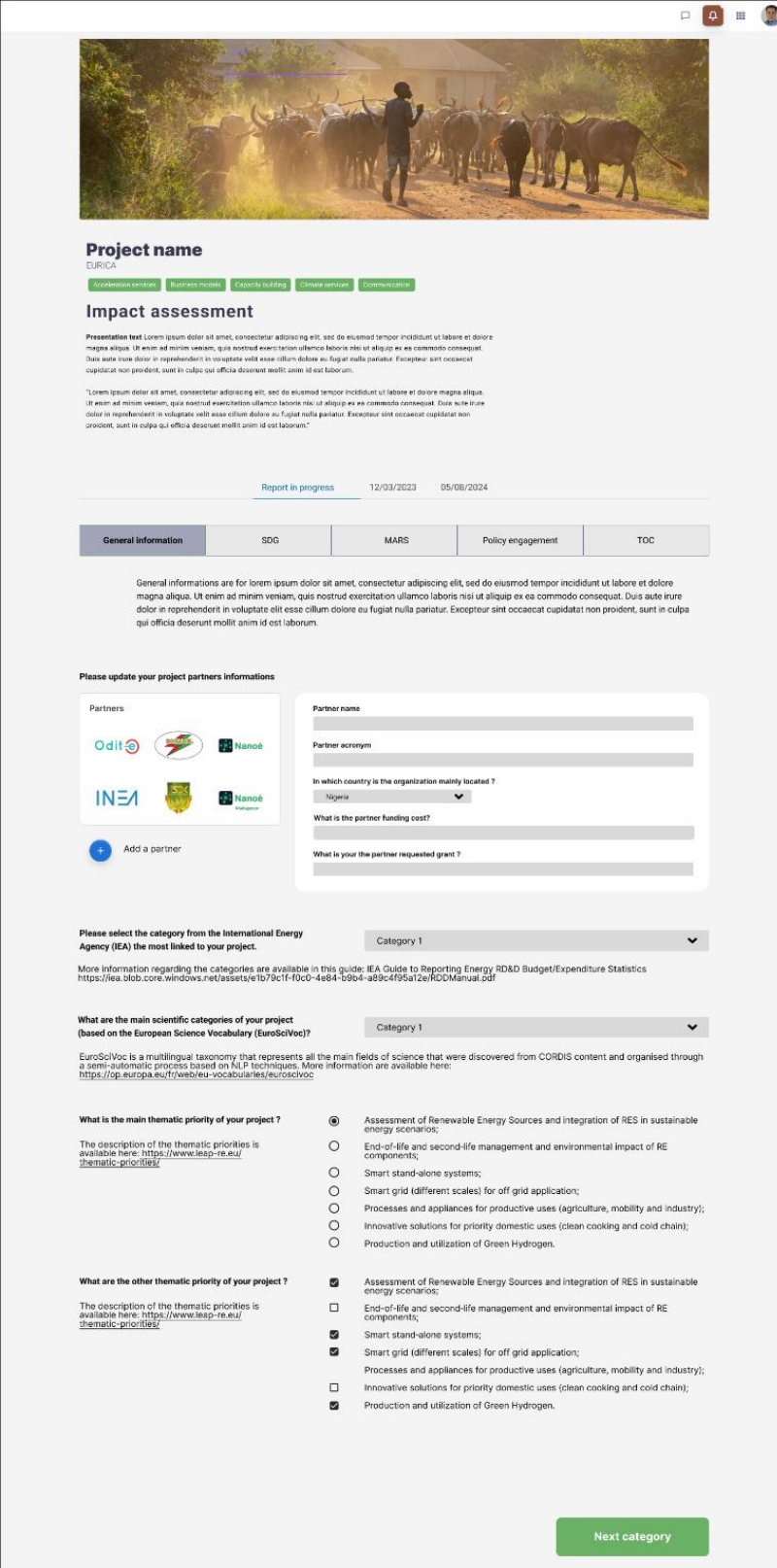
- Specific questions related to the project's category under the IEA agency framework <sup>1</sup> are included, allowing classification of the project according to relevant thematic areas<sup>2</sup>.

---

<sup>1</sup> IEA Guide to Reporting Energy RD&D Budget/ Expenditure Statistics, June 2011 Edition, IEA, 2011, [accessible here](#)

<sup>2</sup> Thematic Priorities, LEAP-RE, [accessible here](#)

- Users can select thematic focuses and other categorizations that support monitoring, reporting, and alignment with LEAP-RE objectives.



**Project name**  
EURICA

Academician content | Business models | Capacity building | Climate services | Communication

**Impact assessment**

**Report in progress** | 12/03/2023 | 05/08/2024

General information	SDG	MARS	Policy engagement	TOC
---------------------	-----	------	-------------------	-----

Please update your project partners informations

Partners: Oditi, Nanaoé, INEA

Partner name: \_\_\_\_\_  
Partner acronym: \_\_\_\_\_  
In which country is the organization mainly located?: Nigeria  
What is the partner funding cost?: \_\_\_\_\_  
What is your partner requested grant?: \_\_\_\_\_

Please select the category from the International Energy Agency (IEA) the most linked to your project. Category 1

What are the main scientific categories of your project (based on the European Science Vocabulary (EuroSciVoc))? Category 1

What is the main thematic priority of your project?

Assessment of Renewable Energy Sources and integration of RES in sustainable energy scenarios;  
 End-of-life and second-life management and environmental impact of RE components;  
 Smart stand-alone systems;  
 Smart grid (different scales) for off grid application;  
 Processes and appliances for productive uses (agriculture, mobility and industry);  
 Innovative solutions for priority domestic uses (clean cooking and cold chain);  
 Production and utilization of Green Hydrogen.

Assessment of Renewable Energy Sources and integration of RES in sustainable energy scenarios;  
 End-of-life and second-life management and environmental impact of RE components;  
 Smart stand-alone systems;  
 Smart grid (different scales) for off grid application;  
 Processes and appliances for productive uses (agriculture, mobility and industry);  
 Innovative solutions for priority domestic uses (clean cooking and cold chain);  
 Production and utilization of Green Hydrogen.

Next category

Figure 3. General information



### **3.4 Sustainable Development Goals (SDG)**

The **SDG** page allows project teams to indicate which Sustainable Development Goals (SDGs) are addressed by their project. Users are prompted with the question: “Which SDGs are addressed by your project?”, and can select one or multiple SDGs relevant to their activities. For each selected SDG, users are required to provide at least a free-text justification explaining how the project contributes to that goal. In addition, for certain SDGs, the platform may request specific quantitative or qualitative data to support the justification. This ensures that contributions are not only claimed but are also evidenced with relevant information.

The structured approach allows:

- Transparent reporting on SDG contributions for each project.
- Data-driven monitoring, enabling later aggregation and visualization in dashboards.
- Consistency across projects, standardizing how SDG impact is documented.



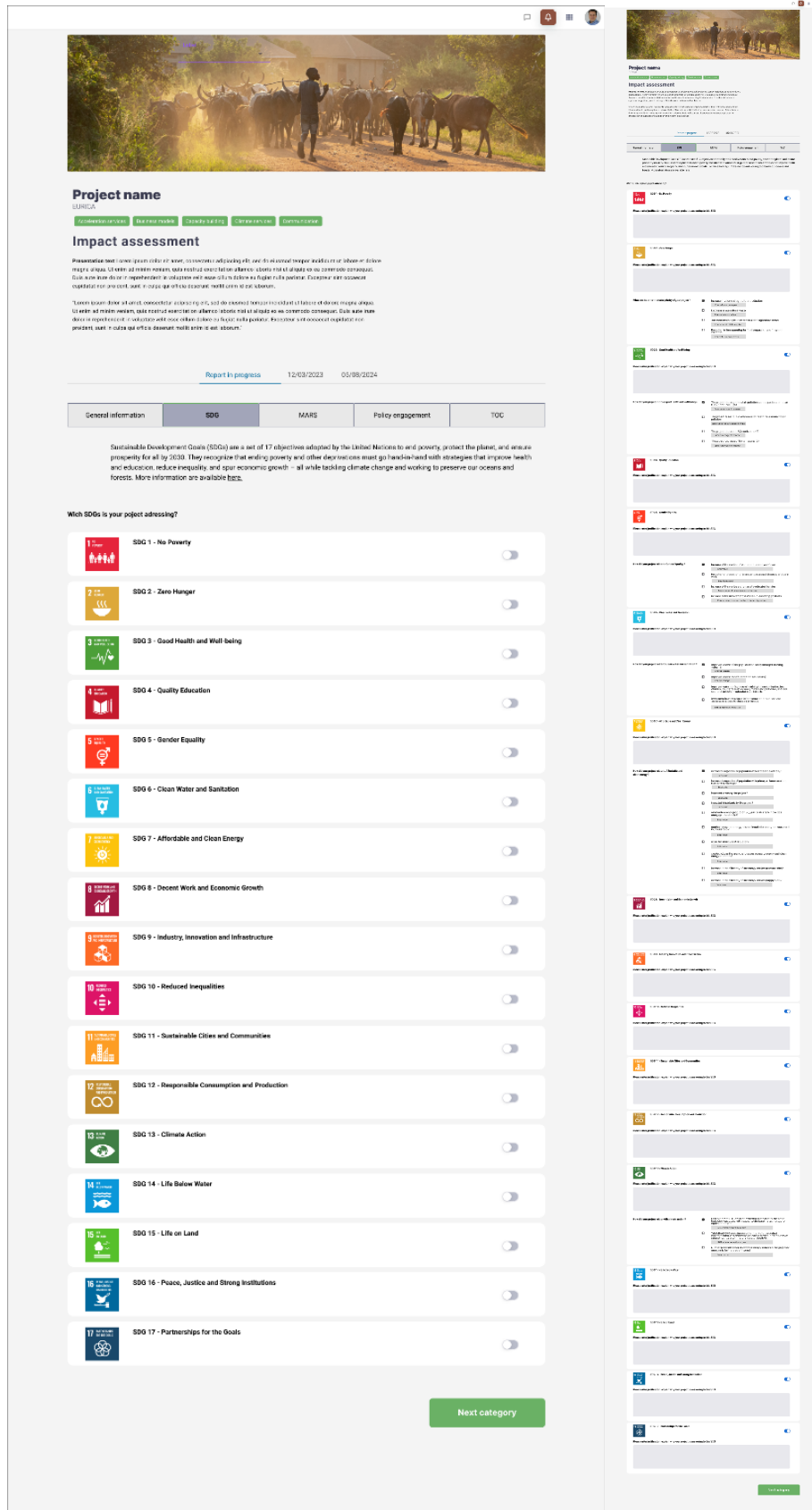


Figure 4. SDG page

### 3.5 Multi-Annual Roadmap (MARs)

The **MARs** page collects information on the tangible results of each project, including activities, products developed, and patents. Project Coordinators and managers provide details on outputs such as prototypes, publications, and other deliverables, as well as the activities that led to these results. This information is then reviewed by Funding Organisations and Programme Coordinators, and feeds into the LEAP-RE dashboards for monitoring and impact analysis.

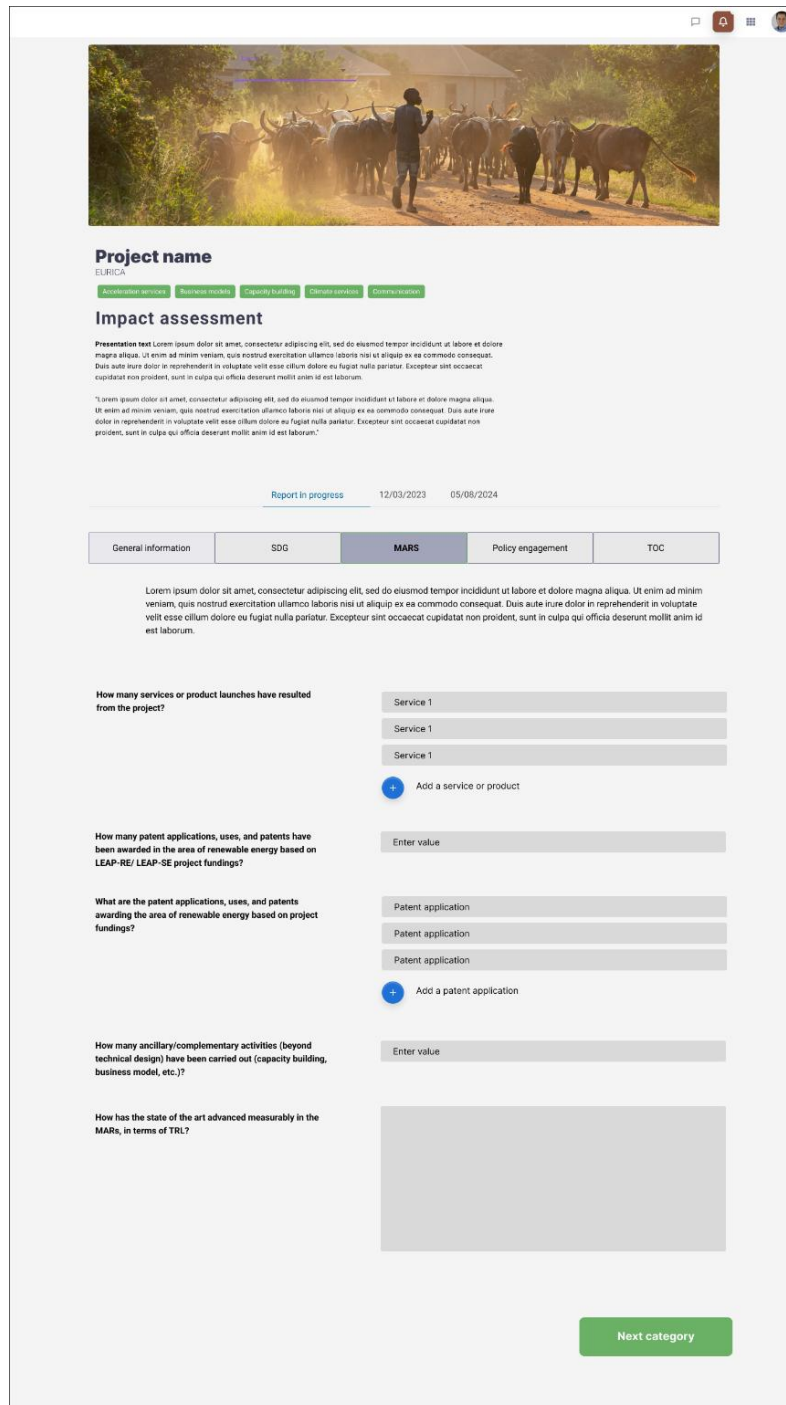
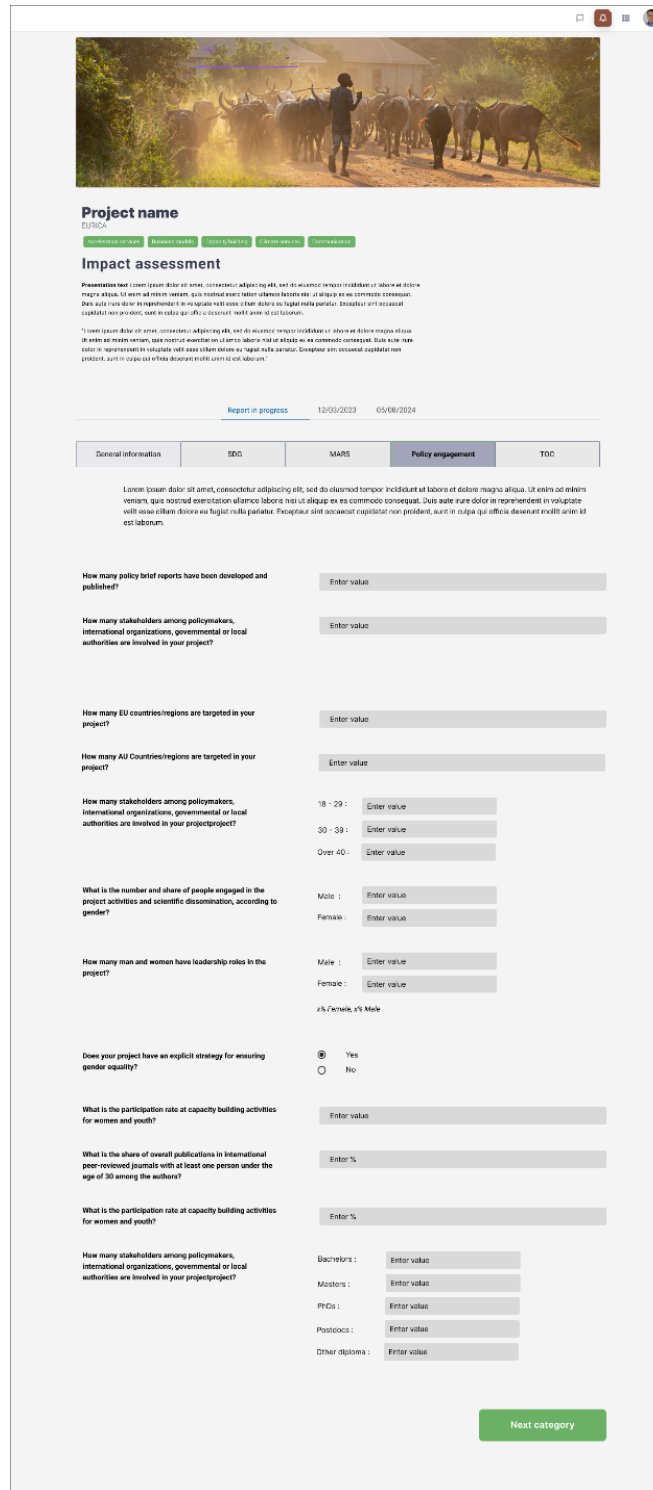


Figure 5. MARs page

### 3.6 Policy engagement

The Policy engagement page captures the broader societal and political impacts of each project. Users provide information on activities and outcomes related to areas such as gender equality, education, civic participation, and other policy-relevant dimensions. This allows projects to report not only on scientific or technical results but also on their contributions to social and policy objectives.



**Project name**  
[Project Name]

**Impact assessment**

Report in progress | 12/03/2023 | 05/08/2024

General information	SDG	MARS	Policy engagement	TDC
<p>How many policy brief reports have been developed and published?</p> <p>Enter value</p>				
<p>How many stakeholders among policymakers, international organizations, governmental or local authorities are involved in your project?</p> <p>Enter value</p>				
<p>How many EU countries/regions are targeted in your project?</p> <p>Enter value</p>				
<p>How many AU Countries/regions are targeted in your project?</p> <p>Enter value</p>				
<p>How many stakeholders among policymakers, international organizations, governmental or local authorities are involved in your project/project?</p> <p>18 - 29 : Enter value</p> <p>30 - 39 : Enter value</p> <p>Over 40 : Enter value</p>				
<p>What is the number and share of people engaged in the project activities and scientific dissemination, according to gender?</p> <p>Male : Enter value</p> <p>Female : Enter value</p>				
<p>How many men and women have leadership roles in the project?</p> <p>Male : Enter value</p> <p>Female : Enter value</p> <p>% Female, % Male</p>				
<p>Does your project have an explicit strategy for ensuring gender equality?</p> <p><input checked="" type="radio"/> Yes</p> <p><input type="radio"/> No</p>				
<p>What is the participation rate of capacity building activities for women and youth?</p> <p>Enter value</p>				
<p>What is the share of overall publications in international peer-reviewed journals with at least one person under the age of 30 among the authors?</p> <p>Enter %</p>				
<p>What is the participation rate at capacity building activities for women and youth?</p> <p>Enter %</p>				
<p>How many stakeholders among policymakers, international organizations, governmental or local authorities are involved in your project/project?</p> <p>Bachelors : Enter value</p> <p>Masters : Enter value</p> <p>PhDs : Enter value</p> <p>Positions : Enter value</p> <p>Other diplomas : Enter value</p>				

Next category

Figure 6. Policy engagement

## **3.7 Theory of Change**

The Theory of Change page collects detailed indicators that link project activities to expected outcomes and impacts. These indicators cover a wide range of aspects, including social, political, economic, and environmental dimensions, as well as gender equality, education, and civic participation.

This section is recognized as one of the most challenging to complete, as it requires precise and structured data. However, the information collected here is essential, as it aligns with the types of indicators commonly used by policy entities to monitor and evaluate projects.

Project Coordinators and managers provide these inputs, which are then used to analyze the causal logic of the project, assess progress toward expected outcomes, and feed into broader dashboards for LEAP-RE.



### 3.8 Validation

The Validation page provides an interface where the Project Coordinators can review and approve their submission before it is officially recorded in the platform. Only the Project Coordinator has the authority to validate the report, ensuring that all information is accurate and complete, not the Team Member.

This step is essential for maintaining data integrity and accountability, confirming that the project’s reporting is ready for review by Funding Organisations and, if applicable, by Programme Coordinators.

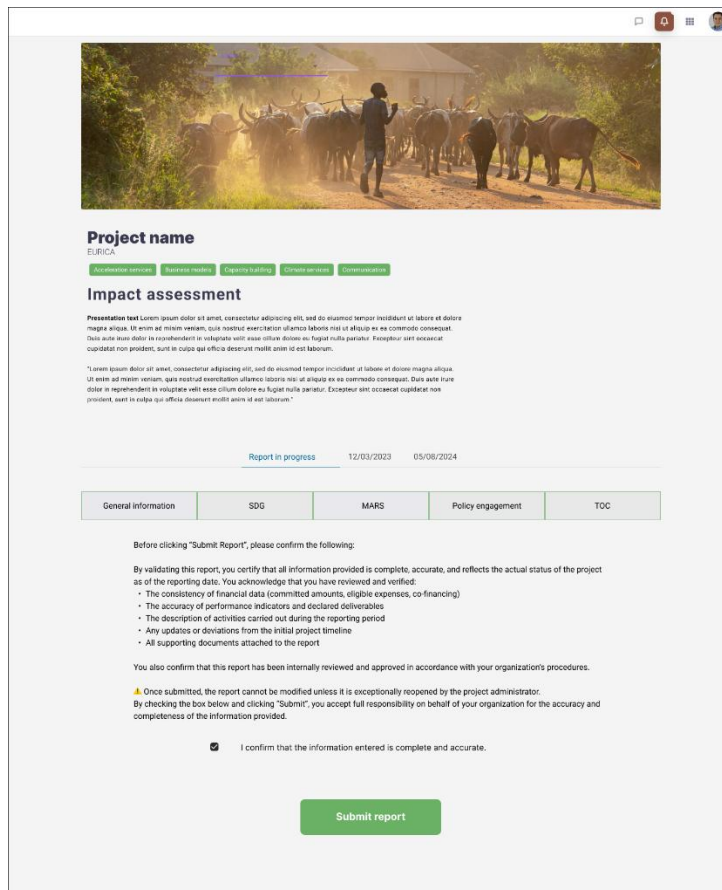


Figure 8. Validation

### 3.9 Back office

The **Back office** serves as the central administrative interface of the MEL Platform, providing comprehensive management and oversight functionalities for all LEAP-RE projects. It allows Admins and assigned reviewers to access, monitor, and manage project information, reporting cycles, and user assignments in a structured and efficient manner.

The Back office consolidates multiple layers of information into a tabular interface, listing all projects along with key metadata such as the date of the latest report, current reporting status, and relevant project details. This enables users to quickly identify which projects have active reports, track progress, and detect pending actions that require attention.

In addition to project listings, the Back office provides a detailed view of all submitted reports and their iterations for each project. This feature ensures full traceability, allowing

Admins and reviewers to follow the evolution of reporting, verify completeness, and check the consistency of submitted information across different reporting cycles.

A central functionality of this interface is the ability to assign reviewers (typically Funding Organisations) to specific projects. Reviewer assignment ensures that each submission undergoes the required multi-level validation process, with responsibilities clearly defined and tracked within the platform.

Beyond reporting management, the Back office supports user and role administration. Admins can assign coordinators, managers, and other participants to projects, define access levels, and manage permissions, ensuring that users only interact with data relevant to their responsibilities.

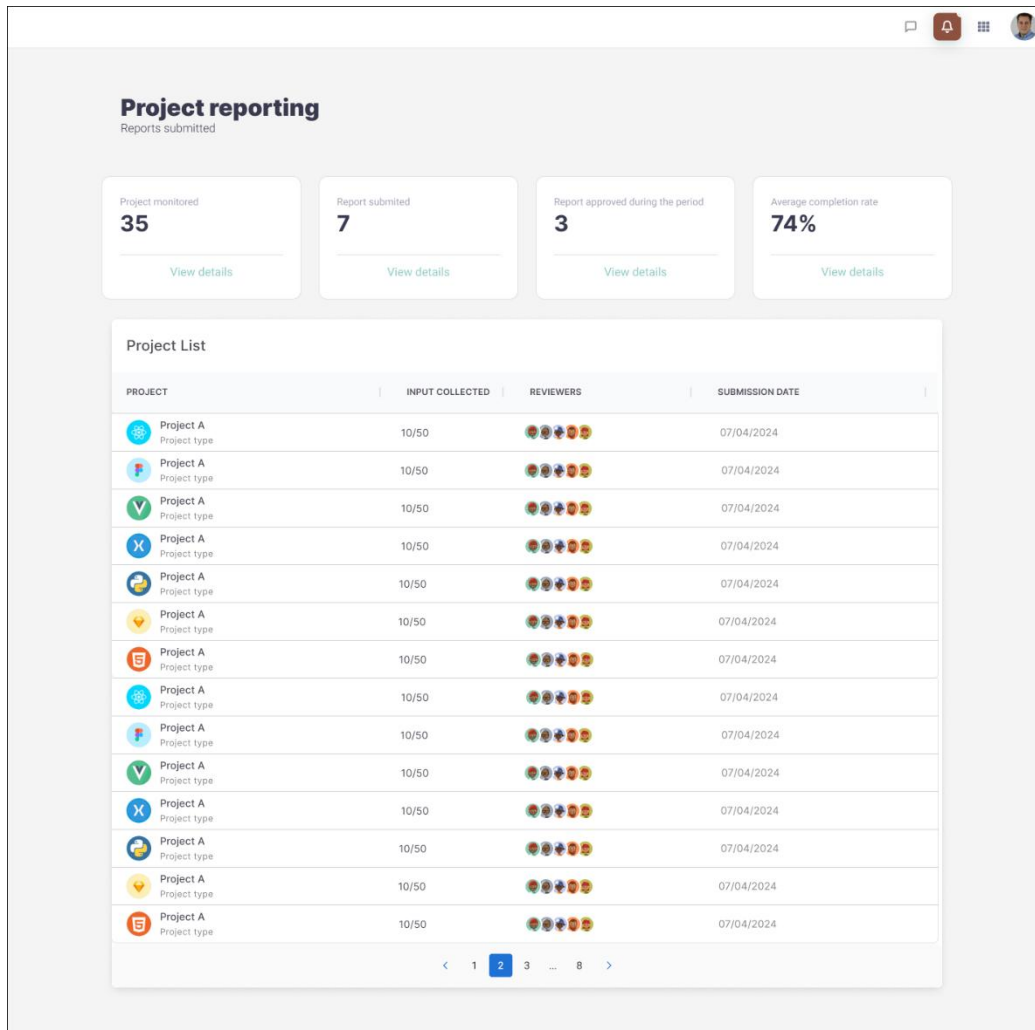


Figure 9. Back office

### 3.10 Dashboard

The **Dashboard** is the central interface for visualizing and monitoring the aggregated data and overall impact of all LEAP-RE projects. It provides Admins with a high-level overview of monitored projects, submitted reports, approved reports, and the percentage of completion, allowing them to quickly assess trends, progress, and areas that require attention.



The Dashboard consolidates data from all sections of the platform, including project profiles, reporting submissions, SDG contributions, MARs results, Policy engagement, and Theory of Change indicators. This aggregated information is presented through interactive visualizations, including a geographical map showing project distribution, pie charts for project categories and countries, a histogram comparing SDGs addressed versus not addressed, and key indicators such as the number of products launched, patents filed, and other tangible outputs.

Key functionalities include:

- **Real-time monitoring of project progress**, showing which projects have active reports, their submission status, and overall percentage of completion.
- **Impact visualization**, aggregating outputs such as products, patents, SDG contributions, social and policy indicators.
- **Automatic calculation of project impact and ranking**, enabling Admins to compare projects based on their contribution to LEAP-RE objectives.
- **Interactive data exploration**, allowing filtering and drill-down by project, thematic area, SDG, country, or reporting period.

The Dashboard supports evidence-based decision making, giving Admins a comprehensive view of overall project performance, impact, and progress across the LEAP-RE portfolio. By centralizing aggregated data, interactive visualizations, and calculated impact rankings in a single interface, the Dashboard ensures that monitoring, evaluation, and strategic oversight are transparent, actionable, and user-friendly. This interface is exclusively accessible to Admin users, ensuring that sensitive project-level data and calculated impact metrics are securely managed.

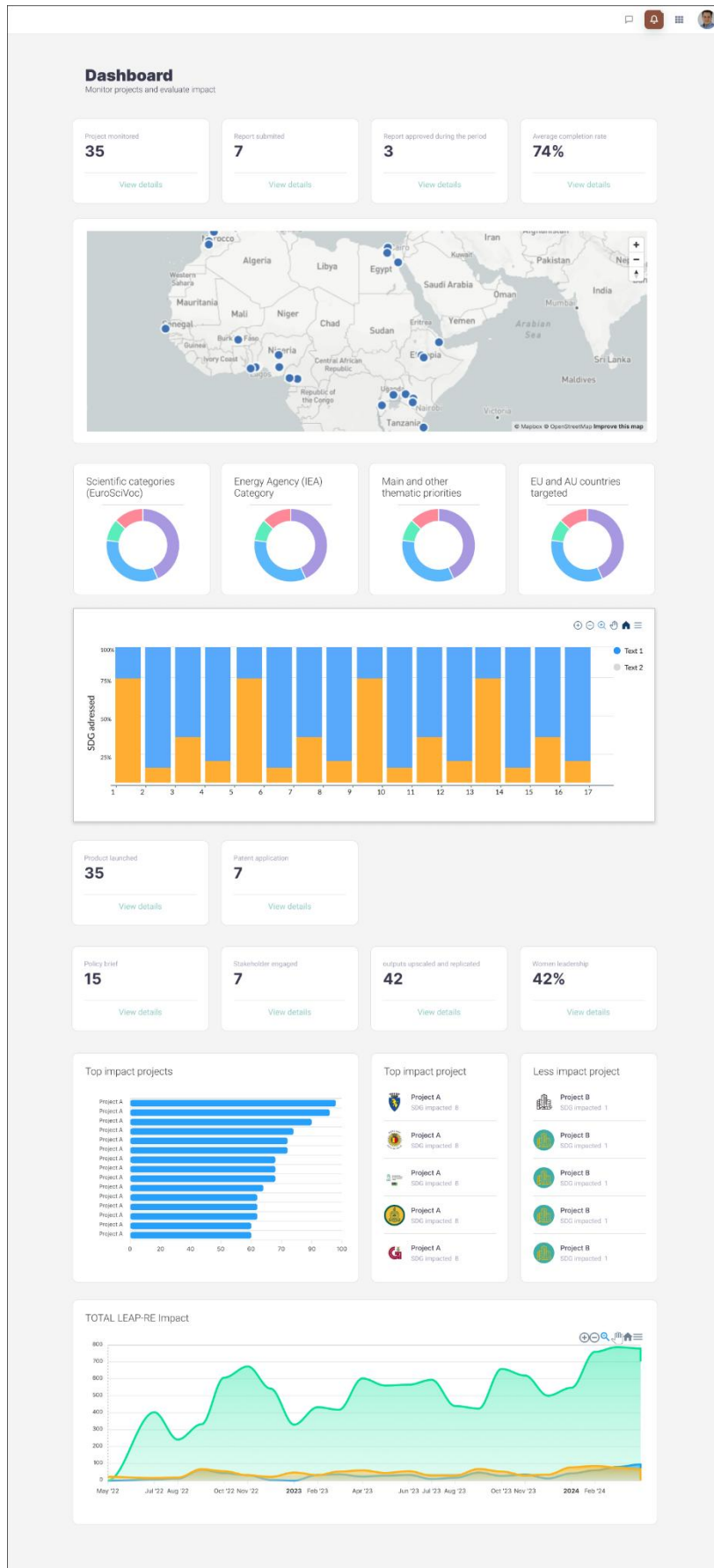


Figure 10. Dashboard page

## 4. Conclusion

The Online MEL Platform for LEAP-RE provides a comprehensive and user-friendly solution for monitoring, evaluating, and learning from all projects within the initiative and its following components. By integrating structured data collection, role-based access, multi-level validation, and advanced data visualization, the platform ensures that project information is accurate, transparent, and actionable.

Through the platform, Project Coordinators and managers can efficiently report project activities, outputs, and impacts, while Funding Organisations and the Programme Coordinators can review, validate, and analyze submissions. The inclusion of aggregated dashboards, SDG tracking, MARS results, Policy engagement indicators, and Theory of Change metrics allows Admins to monitor the overall performance and impact of LEAP-RE in real time.

This platform not only streamlines reporting but also supports evidence-based decision-making and strengthens the capacity of stakeholders to assess the progress and societal contributions of projects. By providing a centralized, interactive, and secure environment, the MEL Platform ensures that LEAP-RE can continuously track its objectives, enhance accountability, and maximize impact.

Importantly, this document serves as a comprehensive reference for the platform's design and functionality, enabling it to be handed over to our developers for the next stage of implementation. The detailed mock-ups and functional descriptions provide clear guidance, ensuring that the platform can be built according to the intended workflows, user interactions, and data visualization requirements.

The Online MEL Platform represents a significant step forward in modernizing project monitoring and evaluation, providing a robust foundation for future learning, policy insights, and impactful management across the LEAP-RE initiative.